

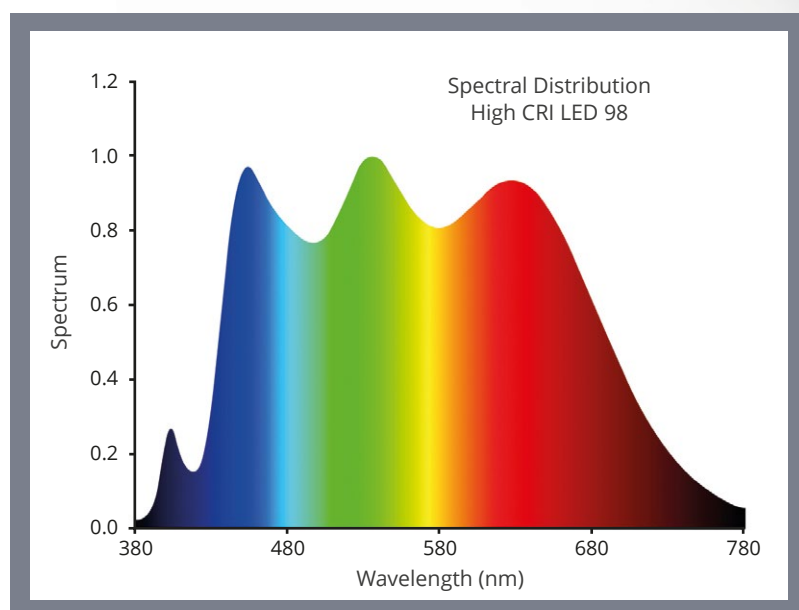
LETTERO

LED CALIBRATOR

ISO 3664



The Lettero LED calibrator is a control and measurement equipment used to adjust light parameters in viewing booths and color control stations that are equipped with standardized light sources **following ISO 3664**.



The device comes in two variants:

- Integrated into CMB viewing booths and CCS control stations.
- As an independent calibration device.



Manufacturer: **KAROŃ**
Łazisko 116, 97-200
Tomaszów Maz., Poland

+48 44 724 26 19,
office@karon.eu,
www.lettero.pl

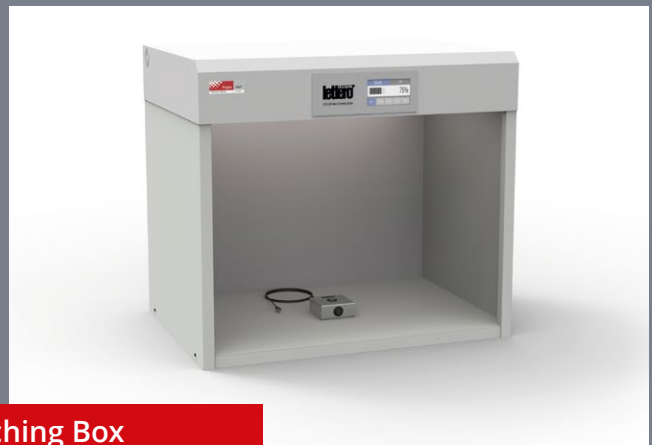
lettero KARON
for color and printing

In the first variant, the calibrator is part of the light settings adjustment module in the control panel of the viewing booth and control station.

In the second variant, the calibrator can be used as a separate equipment by connecting it to viewing booths and control stations via a USB port. The calibrator may then be available for measurement and calibration at a time agreed upon with the customer.



Color Control Station



Color Matching Box

In both cases, the calibrator software allows for remote connection to the Lettero service for ongoing parameter control and remote calibration in real-time, supervised by a Lettero specialist. After calibration, a certificate of compliance of the lighting parameters with the required ISO 3664 standard is issued.



General Lighting Lamps